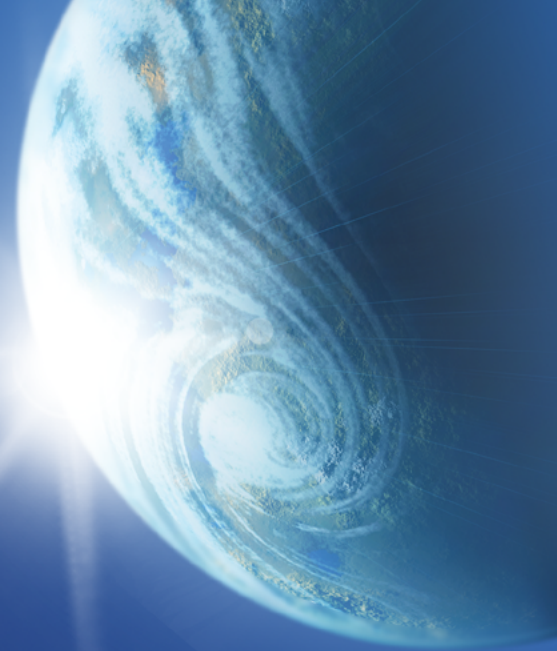




IGC
2024
the 37th International Geological
Congress 2024



IUGS
International Union of Geological Sciences



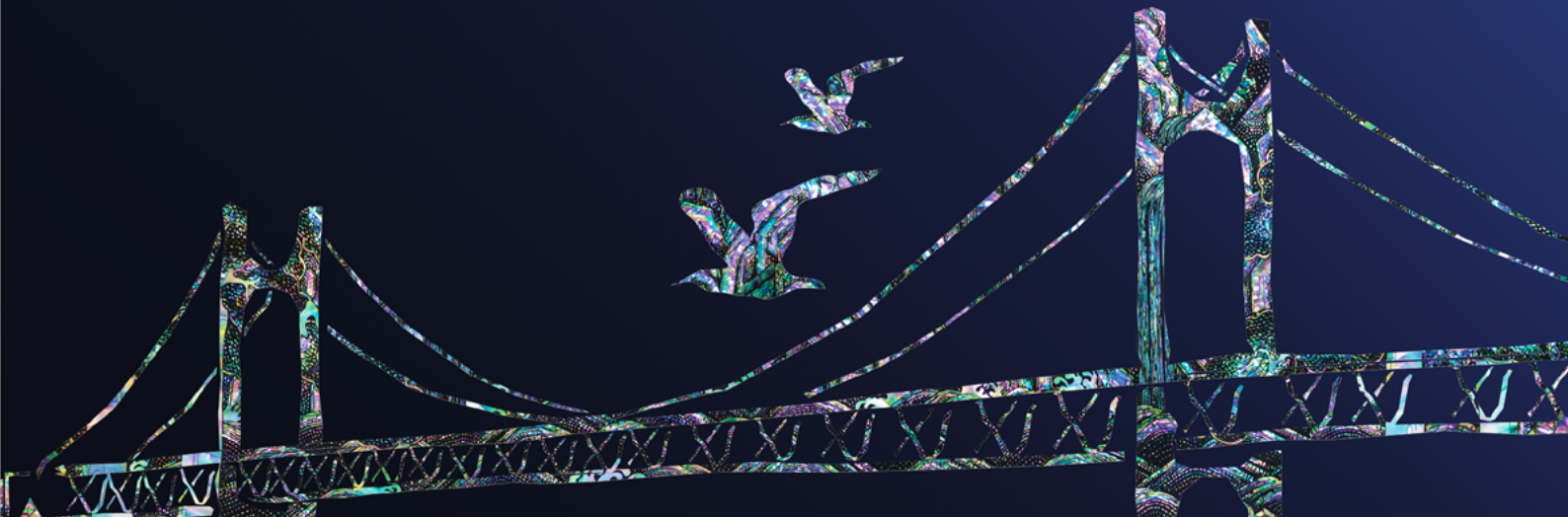
IGC 2024

The 37th International Geological Congress
Busan, Korea
25-31 August 2024



The Great Travelers :
Voyages to the Unifying Earth

FIRST CIRCULAR | February 2023



Contents

MESSAGE FROM THE CHAIRMAN	4
THE 37TH INTERNATIONAL GEOLOGICAL CONGRESS PARTNERSHIP	5
ORGANIZING COMMITTEE	6
IMPORTANT DATES	8
CONGRESS PARTICIPATION	9
GEOHOST SUPPORT	9
CALL FOR SPONSORSHIPS	9
SCIENTIFIC PROGRAM	10
CALL FOR ABSTRACTS	11
FIELD TRIPS	13
SOCIAL MEDIA	21
SPONSORSHIP AND EXPO	22
HOST CITY, BUSAN	24
HOW TO GET TO BUSAN	26
CONVENTION CITY, BUSAN	28
ACCOMMODATIONS	30
VARIOUS TOUR ATTRACTIONS	32
BUSAN NATIONAL GEOPARK	36

**The Second on-line circular is scheduled
on 30th June, 2023.**

MESSAGE FROM THE CHAIRMAN

Dear Geoscientists and Colleagues in Related Fields Worldwide,

It has been seven years since Busan, South Korea was selected to host the 37th International Geological Congress (IGC). Busan was chosen at the 35th IGC in Cape Town, South Africa, in 2016. Unfortunately, the 36th IGC, which was scheduled for March 2020 in India, was held as a virtual event in 2022 due to COVID-19 pandemic.

The IGC 2024 Organizing Committee was established in November 2020 with the support from the Geological Society of Korea, Korea Institute of Geoscience and Mineral Resources (KIGAM), and Busan Metropolitan City. The Organizing Committee has steadily been preparing to make IGC 2024 Busan one of the best congresses ever, being held in South Korea for the first time in history.

As we prepare for the in-person congress in eight years, we feel great responsibility to make it an academic festival for all participating geologists worldwide. The Committee has three main goals in mind.

First, we will provide various programs for the participating geologists to share their research accomplishments and promote joint studies. We also aim to thoroughly prepare the Congress to allow each geologist and society to enjoy academic activities and share information with one another.

Second, we will share the academic values and vision with people worldwide. During the Congress, we will hold simultaneous events and operate hands-on educational and cultural programs to communicate not only with the public but also with those interested in geosciences.

Third, reflecting the consequences of the IGC 2024 Busan, we will keep building the legacy of the Congress to popularize geoscience, strengthen the global network among the participating researchers, and implement domestic and international programs for the next generations.

We therefore sincerely ask for your interest and support for the so-called, the Olympic Games in the field of geoscience, and your participation in the IGC 2024 Busan.

Sincerely yours,



Daekyo CHEONG *Daekyo Cheong*
Chairman, the 37th IGC Organizing Committee

The 37th International Geological Congress Partnership



ORGANIZING COMMITTEE

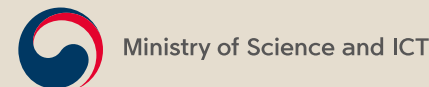
Organized by



Hosted by

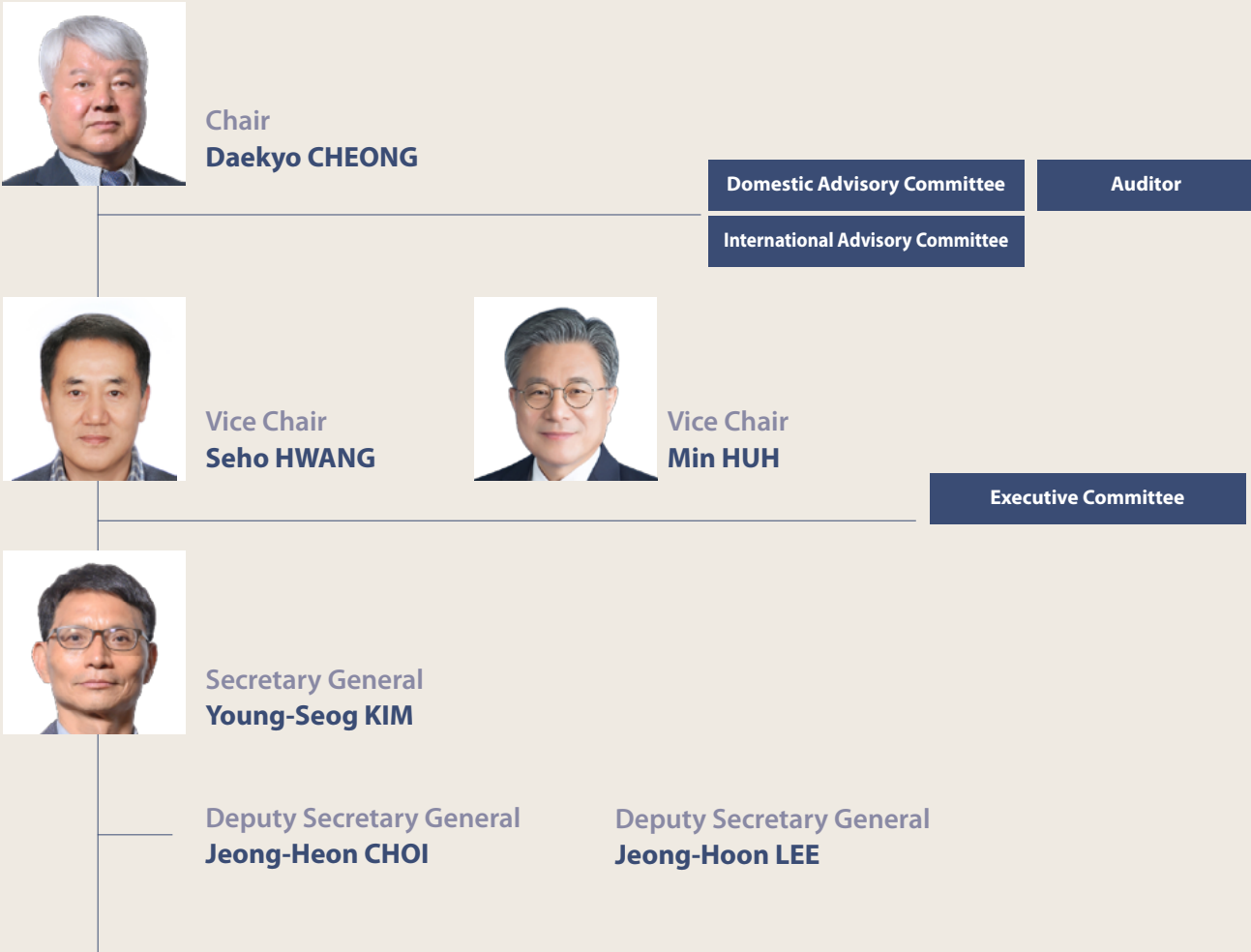


Sponsored by



CONGRESS BOARD AND COMMITTEE

Organization chart



Sub-Committee Director

Planning and Finance Committee	Scientific Program Committee	Field Trip Committee
Byung-Gon CHAE	Jin-Yong LEE	Seung-Ryeol LEE
finance@igc2024korea.org	scicommittee@igc2024korea.org	fieldtrip@igc2024korea.org
GeoExpo Committee	Global Cooperation Committee	Administrative Support Committee
Sung-Keun LEE	Yongje KIM	Geun-Hee LEE
geoexpo@igc2024korea.org	37igc@igc2024korea.org	administration@igc2024korea.org

IMPORTANT DATES

Content	Dates	
	Open	Close
Call for Workshop, Short course and Business meeting proposal	25 Aug 2022	16 Feb 2024
Pre-Survey of exhibition demand	04 May 2023	04 Jul 2023
2 nd Circular release	30 Jun 2023	
Abstract submission	04 Sep 2023	16 Feb 2024
Application for the GeoHost Support Program	04 Sep 2023	01 Mar 2024
Early bird registration	04 Sep 2023	26 Apr 2024
GeoExpo application	04 Sep 2023	31 May 2024
Volunteer application	02 Oct 2023	29 Mar 2024
Accommodation booking	06 Nov 2023	21 Jun 2024
3 rd Circular release	22 Dec 2023	
Field Trip registration	08 Jan 2024	26 Apr 2024
Notification of acceptance to applicants (Abstract, Short course, Seminar, Workshop and Business meeting, GeoHost etc.)	05 Apr 2024	
Regular registration	27 Apr 2024	26 Jul 2024
4 th Circular release – preliminary program	28 Jun 2024	
On-site registration	24 Aug 2024	

*The dates above are in Korea Standard Time (KST, UTC/GMT +9)
*In case that the schedules above are to be changed under some unavoidable circumstances, it will be announced in advance through the official website of IGC 2024 (www.igc2024korea.org)

CONGRESS PARTICIPATION

The Organizing Committee of the 37th International Geological Congress (IGC) welcomes all participants to the IGC 2024 in Busan, South Korea. The 37th IGC website (www.igc2024korea.org), newsletter and social media platforms will provide you information about the Congress.

All delegates are required to register online and pay the appropriate Congress fee, which is compulsory for having their oral or poster presentations included in the final program.

GEOHOST SUPPORT

GeoHost is an assistance program designed and developed by the IUGS to support the attendance of young and financially disadvantaged geoscientists who want to attend the IGC.

The Organizing Committee of the 37th International Geological Congress will provide GeoHost Support to help young and financially disadvantaged geoscientists to participate in the 37th IGC. Those who wish to be considered for the program for their presentations at the 37th IGC are cordially asked for submitting the application online, using the template which will be provided in the 37th IGC website.

Funding will cover (fully or partially) registration fee, travel and accommodation costs. The applications will be available on the 37th IGC website (www.igc2024korea.org) from 4th September 2023 to 1th March 2024. The successful applications will be notified to the applicants' email accounts by 5th April 2024.

CALL FOR SPONSORSHIPS

The Organizing Committee of the 37th International Geological Congress opens an invitation to organizations and individuals to participate in the Congress by sponsoring.

Since each potential sponsor has a different set of objective, requirement, and budget, a number of sponsorship options are available, which allows sponsors to choose the opportunity that best meets their particular requirements. Interested parties are encouraged to check the options. However, should the proposed opportunities not suit your company needs, please contact the organizers to discuss alternatives.

Please note that sponsorship packages are allocated on a 'first come first served' basis and, once allocated, sponsors will be supported to ensure that they receive the maximum return on their investment and the agreed level of exposure.

Once again, we encourage you to visit our website and/or contact the 37th IGC Secretariat at www.igc2024korea.org for more information.

SCIENTIFIC PROGRAM

Scientific Program Committee

Chair : Roland Oberhaensli (University of Potsdam)

Advisory Board

John Ludden CBE President, IUGS (Heriot-Watt University)
Weon-Seo KEE President, The Geological Society of Korea (KIGAM)
Young Joo Lee Director, CCOP Technical Secretariat (KIGAM)
Helen M. Graves President, EGU (British Geological Survey)
Vijay Prasad Dimri President, 36 th IGC (Andhra University)
Qiuming Cheng Past-President, IUGS (China University of Geosciences)
Hassina Mouri Vice President, IUGS (University of Johannesburg)

International Scientific Committee

Ian Clark	University of South Australia
Martina Koelbl-Ebert	University of Munich
Zhang Minghua	China Geological Survey
Kombada Mhopjeni	Geological Survey of Namibia
Philip Leonard Gibbard	University of Cambridge
Jin-Yong Lee	Kangwon National University
Patricio Guillermo VILLAFANE	Instituto Superior de Correlación Geológica
Jian-Cheng Lee	Academia Sinica
Min Te Chen	National Taiwan Ocean University
Shmuel Marco	Tel Aviv University

CALL FOR ABSTRACTS

GENERAL INFORMATION

The Scientific Committee invites authors to submit their abstracts. The Scientific Committee is preparing regular and special sessions based on 38 sub-themes. Sessions that do not reach the minimum number of abstracts may be combined with general or related sessions.

- The presenting author has to register for the Congress in order for the abstract to be included in the final program.
- Authors need to indicate their preferred session and presentation mode (oral or poster) although the final decision will be made by session convener(s) and organizing committee.

KEY DATES

- Abstract submissions open: 4 September 2023
- Abstract submissions close: 16 February 2024

ABSTRACT SUBMISSION

- The abstract submission form can be downloaded from our website at www.igc2024korea.org
- Fill in the title, author(s), affiliation(s), and main text in English.
- Abstract text should be clear and concise with 200–500 words.
- Figures/graphs/tables are not accepted.

SHORT COURSES, SEMINARS, WORKSHOPS and BUSINESS MEETINGS

The Scientific Program Committee welcomes proposals for workshops, seminars and short courses, or business meetings. The proposal coordinators should inform to the Scientific Program Committee relevant information on the venue capacity, the meeting duration and other additional information, including presentation or catering needs.

SUBTHEMES

	Contents
T1	Sedimentary Geology
T2	Quaternary Geology
T3	Earth History and Stratigraphy
T4	Tectonophysics
T5	Planetary Sciences
T6	Metamorphism
T7	Volcanology
T8	Petrology
T9	Structural Geology
T10	Geomorphology
T11	Paleontology and Paleoanthropology
T12	Resource Geology and Economic Geology
T13	Mineralogy
T14	Low Temperature Geochemistry
T15	Paleoclimate and Paleoceanography
T16	Coastal, Marine, and Lacustrine Geosciences
T17	Geoscience in Alpine and Polar Regions
T18	Groundwater and Hydrogeology
T19	Geobiology
T20	Biogeochemical cycles
T21	Environmental Geosciences
T22	GIS and Remote Sensing
T23	Seismology
T24	Geophysics
T25	Geotechnology and Geophysical Exploration
T26	Geoscience Education
T27	Geoheritage, Geoparks, and Geotourism
T28	Forensic Geology and Medical Geology
T29	Engineering Geology and Geomechanics
T30	Urban Geology
T31	Geohazards
T32	Mitigation and Adaptation in Climate Crisis
T33	Big Data and Artificial Intelligence (AI) in Geoscience
T34	Energy and Carbon Neutrality
T35	Geoscience and Policy
T36	Management of Radioactive Resources and Waste
T37	Deep-Time Digital Earth: IUGS DDE Session
T38	Anthropocene (Special Session)

FIELD TRIPS

The Korean Peninsular, despite being a small land mass, preserves a variety of geological treasures that have formed over a long geologic time since the Late Archean. Why not become truly great travelers by participating in Field Trips? About 40 courses are being planned throughout all over the South Korea and neighboring countries. Here in the 1st Circular, 32 domestic courses are briefly introduced. Overseas courses are under preparation and will be updated soon after.

The domestic Field Trip courses are arranged into three topics: Geology of Korea, Geoparks, and Geohazards. Any registering and accompanying persons are able to participate in Field Trips before and after the congress over a few days. Mid-congress Field Trip programs are also available to Busan and surrounding attractions for a day or half. Please see the list and map below for the planned courses.

Registration for the Field Trips is planned to open on 8 Jan 2024 and close on 26 April 2024. In this stage, the registration will be accepted on a first-come, first-served basis, and if the maximum number of participants is reached, the registration will be closed. If the minimum number of participants is not met, the course may be combined with other courses or canceled.

In this case, the participation fee will be refunded. Detailed information for each Field Trip course, such as participant fee, max., and min. numbers of the participants will be updated as soon as possible.

Pre-Congress Field Trips

PrK1	A journey to multiple geological events in South Korea from the Paleoproterozoic to Neoproterozoic (leebc@jnu.ac.kr)
Duration	2 days
Trip area	Sancheong-Chungju-Chuncheon-Hwacheon
Summary	We will conduct Field Trip on various geological events in the Gyeonggi and Yeongnam massifs during the Pre-cambrian in the context of the formation and separation of the supercontinents of Colombia and Rodinia.

PrK2	Evolution of the Cretaceous Gyeongsang Basin in Korea (tchoi@knue.ac.kr)
Duration	3 days
Trip area	Jinju-Sacheon-Busan
Summary	It is planned to conduct Field Trip for understanding the evolution of Cretaceous sedimentary basins in the Korean Peninsula, including the Gyeongsang Basin.

PrK3	Vertebrate fossils from Korean Cretaceous Dinosaur Coast (KCDC) (jongyun1991@gmail.com)
Duration	3 days
Trip area	Haenam-Boseong-Yeosu-Mokpo
Summary	A number of vertebrate fossils that have been excavated and studied in representative fossil sites of the Cretaceous Dinosaur Coast (KCDC) on the Korean Peninsula, which have been applied for UNESCO World Heritage sites, will be observed at theme parks and dinosaur museums.
PrK4	Geomorphic development of coastal features with sea level changes since the last interglacial stage: Coastal dunes and shore platforms (geoist@cku.ac.kr)
Duration	3 days
Trip area	Taeon-Anmyeon Island-Seocheon
Summary	The Field Trip will be conducted with the theme of sea level change and coastal topography development process in the west coast since the last interglacial period.
PrK5	Pleistocene marine terrace and uplift Implication in the SE Korean Peninsula (hoillee@kigam.re.kr)
Duration	2 days
Trip area	Pohang-Gyeongju
Summary	We plan to explore coastal terraces that developed in the southeastern part of the Korean Peninsula and discuss the rate of uplift.

Post-Congress Field Trips

PoK1	A journey to multiple geological events in South Korea from the Paleoproterozoic to Neoproterozoic (leebc@jnu.ac.kr)
Duration	4 days
Trip area	Sancheong-Chungju-Chuncheon-Hwacheon
Summary	We will conduct Field Trip on various geological events in the Gyeonggi and Yeongnam massifs during the Precambrian in the context of the formation and separation of the supercontinents of Colombia and Rodinia.
PoK2	Metamorphism of the Imjin-gang Belt in the Gyeonggi Marginal Belt, South Korea (yoonsup@cbnu.ac.kr)
Duration	3 days
Trip area	Imjin River Belt
Summary	We will conduct Field Trip on major features of metamorphism in the Imjin-gang Belt during the late Permian to Early Triassic.

PoK3	The multiple collision in the Hongseong-Taeon area from Paleoproterozoic to Triassic (ocwhan@jbnu.ac.kr)
Duration	3 days
Trip area	Hongseong-Taeon
Summary	In the Hongseong-Taeon region, the evidences of the continental collisions that occurred during the Paleoproterozoic and Neoproterozoic, middle Paleozoic, Permian-Triassic will be confirmed through the Field Trip with the discussion of geological contrast between Korea and China.
PoK4	Late Paleozoic metamorphism and deformation in the Taebaeksan Basin (haskim2@korea.ac.kr)
Duration	2 days
Trip area	Jeongseon-Gangneung-Samcheok
Summary	The Field Trip will be conducted mainly on metamorphic rocks in the Pyeongan Supergroup showing various ductile structures formed by the Alpine type regional metamorphism during the late Paleozoic.
PoK5	Cambro-Ordovician sedimentation and biotic evolution in East-Central Korea (sjchoh@korea.ac.kr)
Duration	4 days
Trip area	Mungyeong-Yeongwol-Taebaek
Summary	The Field Trip will be conducted with the theme of sedimentary facies and biological evolution of the Cambrian-Ordovician strata in the central part of the Korean Peninsula, where the early Paleozoic strata of the eastern-most part of the North China Plate is preserved.
PoK6	Evolution of the Cretaceous basins in Korea I (tchoi@knue.ac.kr)
Duration	5 days
Trip area	Busan-Sacheon-Jinju-Jinan-Gyeokpo
Summary	It is planned to conduct Field Trip for understanding the evolution of Cretaceous sedimentary basins in the Korean Peninsula, including the Gyeongsang Basin.
PoK7	Miocene crustal deformation and basin evolution in SE Korea (igumany@pusan.ac.kr)
Duration	3 days
Trip area	Gyeongju-Pohang
Summary	It is planned to conduct Field Trip for understanding the Miocene tectonic events in the southeastern margin of the Korean Peninsula, which contains various geological records of the eastern marginal sea between Korean Peninsular and Japanese Islands.
PoK8	Quaternary geology (tidal flats) and geoarchaeology of the southwest coast of the Korean Peninsula (kjc76@kigam.re.kr)
Duration	3 days
Trip area	Gochang-Buan-Sinan-Mokpo-Boseong-Suncheon
Summary	The Field Trip will be conducted on intertidal sedimentary layers widely distributed in the southwest coast of the Korean Peninsula and the archaeological sites in the southwestern region, including dolmens.

PoK9	Tracking magmatic response recorded in Korean Cordillera (jhj8218@kigam.re.kr)
Duration	5 days
Trip area	South Korea
Summary	We plan to conduct Field Trip with the theme of magmatism and crustal evolutions recorded in Phanerozoic granites distributed in South Korea.
PoK10	Phreatomagmatic volcanism and volcanoclastic sedimentation in basaltic volcanic field (Jeju island, Korea) (yksohn@gnu.ac.kr)
Duration	5 days
Trip area	Jeju island
Summary	Jeju island is an area where world-class outcrops of phreatomagmatic volcanoes (tuff rings and tuff cones) appear. The main purpose of this Field Trip is to introduce the results of volcanic-sedimentological research on the volcanoes of Jeju island over the past several decades.
PoK11	DMZ, the space of the collision and peace in the Korean Peninsular (hillskim@kangwon.ac.kr)
Duration	2 days
Trip area	Cheolwon-Pocheon
Summary	This site is the boundary between the Imjingang belt, the representative Phanerozoic fold-and-thrust belt of the Korean Peninsula, and the Gyeonggi massif, where the topography formed by volcanic eruptions and subsequent river action, will be explored together with the relationship with the Korean War.
PoK12	UNESCO Hangtangang River Geopark (ssw7304@kangwon.ac.kr)
Duration	3 days
Trip area	Yeoncheon-Pocheon-Cheolwon
Summary	The Hantangang River Geopark, which was certified as a UNESCO Global Geopark in 2019. We planed to conduct field trip to canyons, plains and Pocheon Art Valley, Jeongok Prehistoric Sites, and Cheorwon Peace Observatory related to the geological attraction of Hantangang River Basalt.
PoK13	Quaternary geomorphological evolution, mountains and coasts (nahmwh@kigam.re.kr)
Duration	4 days
Trip area	Yangyang-Sokcho-Goseong
Summary	We plan to explore Mt. Seorak and the lagoon area of the east coast of the Korean Peninsula, which preserves various processes of mountain and coastal topography development during the Quaternary glacial-interglacial period.
PoK14	A living underground river: the Baeg-nyong Cave, Pyeongchang, South Korea (kjo@kangwon.ac.kr)
Duration	2 days
Trip area	Pyeongchang
Summary	We plan to explore the Baeg-nyong Cave and the nearby Chiljokryeong tracking course, where you can see the development process of the Donggang meander flowing through Jeongseon-Pyeongchang-Yeongwol in Gangwon-do.

PoK15	Cretaceous vertebrate tracks of Korea II (kimks@cue.ac.kr)
Duration	4 days
Trip area	Gyeongsannam-do
Summary	It is planned to conduct Field Trip on fossil sites of dinosaur eggs and footprints of vertebrate animals of the Cretaceous found in the Jinju Formation, Haman Formation, and Jindong Formation.
PoK16	Jeju island UNESCO Global Geopark (geo99@hanmail.net)
Duration	5 days
Trip area	Jeju island
Summary	We plan to explore Jeju island’s geosites where you can observe the various volcanic activities and volcanic topography of the Jeju island formed by the Quaternary volcanic activity.
PoK17	Exploring Gyeongbuk Donghaean Geopark and Cheongsong UNESCO Global Geopark (jangyd@knu.ac.kr)
Duration	4 days
Trip area	Gyeongju-Pohang-Cheongsong-Yeongdeok-Uljin
Summary	We plan to explore East Coast Geopark and Cheongsong UNESCO Global Geopark, which preserve geological diversity from the Precambrian to the Cenozoic such as volcanic eruptions and dinosaur footprints.
PoK18	The Cretaceous Dadaepo Basin in the Songdo Peninsula Geosite of the Busan National Geopark (tracker@pusan.ac.kr)
Duration	3 days
Trip area	Busan National Geopark
Summary	We plan to visit the representative geological attractions of Busan National Geopark, including the Dadaepo Basin formed by pull-apart basin opening due to the sinistral movement of Yangsan Fault System during the Cretaceous.
PoK19	Mudeungsan UNESCO Global Geopark (wy0923@korea.kr)
Duration	3 days
Trip area	Gwangju-Hwasun-Damyang
Summary	Under the theme of the UNESCO Mudeungsan Global Geopark tour, we planed to visit geological attractions, historical and cultural attractions, and climate change experience center.
PoK20	Geological records of paleo-earthquakes on Yangsan Fault and Ulsan Fault in SE Korea (cjh9521@kigam.re.kr)
Duration	3 days
Trip area	Pohang-Gyeongju-Ulsan
Summary	Under the theme of the paleo-earthquakes along the Yangsan and Ulsan faults, we planed to observe the stratigraphic records of prehistoric earthquakes confirmed on the excavation investigations.

PoK21	From nuclear power plant to decommission and disposal facility in Republic of Korea (jjy@korad.or.kr)
Duration	3 days
Trip area	Gori-Gyeongju
Summary	Under the theme of short-term and long-term geological risks to nuclear facilities, it is planned to visit nuclear power plants in operation, decommissioning processes, and disposal facilities in Korea.
PoK22	Hapcheon Impact Crater (limjs@kigam.re.kr)
Duration	1 day
Trip area	Hapcheon
Summary	We plan to explore various field sites, including the Daeamsan Observatory, where you can experience the beautiful natural scenery in and around the Hapcheon Meteorite Impact Crater.
PoK23	Magmatic-hydrothermal W-Mo-Fe-Zn-Pb mineralization of Taebaeksan metallogenic region in NE Korea (seo28@snu.ac.kr)
Duration	3 days
Trip area	Jeongseon-Yeongwol-Taebaek-Jecheon
Summary	The high-temperature hydrothermal deposits, alternating deposits, and low-temperature hydrothermal deposits will be explored, and the related magma-hydrothermal evolution and deposit formation mechanisms will be discussed.



Mid-Congress Field Trips

MK1	The Cretaceous Dadaepo Basin in the Songdo Peninsula Geosite of the Busan National Geopark (tracker@pusan.ac.kr)
Duration	0.5 day (every day during the Conference)
Trip area	Busan National Geopark
Summary	We plan to visit the representative geological attractions of Busan National Geopark, including the Dadaepo Basin formed by pull-apart basin opening due to the sinistral movement of Yangsan Fault System during the Cretaceous.
MK2	Cretaceous vertebrate tracks of Korea (kimks@cue.ac.kr)
Duration	1 day
Trip area	Gyeongsannam-do
Summary	It is planned to conduct Field Trip on fossil sites of dinosaur eggs and footprints of vertebrate animals of the Cretaceous found in the Jinju Formation, Haman Formation, and Jindong Formation.
MK3	City tour in Gyeongju: History and culture of Silla Dynasty (BC 57 - AD 935)
Duration	1 day
Trip area	Gyeongju-city
Summary	We plan to visit the top attractions, such as Bulguksa Temple, Seokguram Grotto, the Daereungwon Tomb Complex, and the traditional village, of the history and culture of Korea's ancient Silla Dynasty.
MK4	Hapcheon Impact Crater (limjs@kigam.re.kr)
Duration	1 day
Trip area	Hapcheon
Summary	We plan to explore various field sites, including the Daeamsan Observatory, where you can experience the beautiful natural scenery in and around the Hapcheon Meteorite Impact Crater.

Contents of the Field Trips in neighboring countries will be open in the 2nd Circular.

SOCIAL MEDIA

A volume of conversation and interaction, especially through social media platforms, is already taking place between the members of the Organizing Committee and the thousands of prospective delegates. An increase in interaction is expected when IGC 2024 approaches, then delegates and the Committee members would be old friends!

The 37th IGC makes use of three main social media platforms: [Facebook](#) and [Youtube](#) as well as a blog on the [Website](#) to keep delegates abreast of preparations for this ‘Olympics of Geology’.



Youtube
[Click Here](#)



igc2024korea.org
[Click Here](#)



Facebook
[Click Here](#)



SPONSORSHIP AND EXPO

The organizing committee of the International Geological Congress (IGC) 2024 would like to extend to you an invitation to participate in exhibiting at the congress.

Based on the attendance at recent IGCs (Brisbane, Oslo, Florence, and Cape town), IGC 2024 is expected to attract between 6,000 and 10,000 geologists and earth scientists all over the world. The IGC 2024 provides an excellent opportunity to promote and initiate scientific and business collaborations and attract talented experts in broadly defined earth and environmental sciences.

Sponsors and exhibitors are invited to participate in the Congress and will be acknowledged on the Congress website, in promotional materials and onsite at the Congress venue. IGC 2024 offers different sponsorship levels. Detailed information will be available in the website below:

IGC 2024 Exhibition [Click Here](#) 

A Provisional Overview of the Exhibition Build-up and Dismantling Schedule

24 August 2024	08.00 – 22.00	Build-up
25 August – 31 August 2024	09.00 – 17.00	Opening hours
31 August 2	18.00 – 22.00	Break-down

Email: info@igc2024korea.org
Website: <http://www.igc2024korea.org/2024>



• Gwangan Bridge



• Busan Cinema Center

HOST CITY, BUSAN

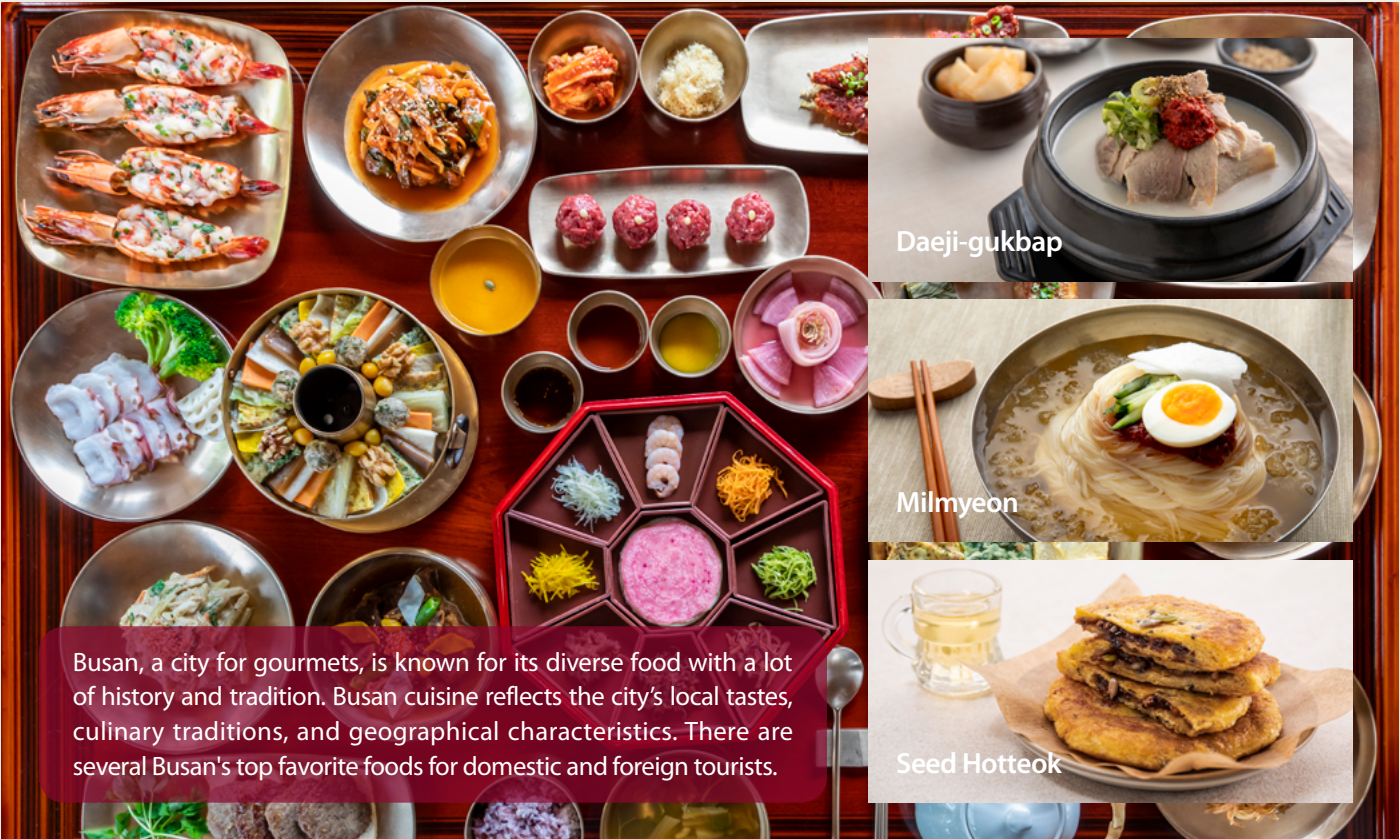


Busan, a bustling city of approximately 3.5 million residents, is located on the southeastern tip of the Korean peninsula. The size of Busan is 769.89 km² which is only 0.8% of the whole landmass of the Korean Peninsula. The natural environment of Busan is a harmonious relationship of mountains, rivers and sea. Its geography includes a coastline featuring superb beaches, scenic cliffs, and mountains that provide excellent hiking and extraordinary views with hot springs scattered throughout the city. Busan enjoys four distinct seasons and a temperate climate that never gets too hot or too cold.

HOST CITY, BUSAN



The weather in August provides a perfect condition to visit Busan! Summer starts at the end of June and ends in early September. The rainy season starts at the end of June and lasts until the beginning of August. Precipitation during the summer months accounts for 50 to 60 percent of the total for the year. Although the rainy season is over, preparation for rain is essential for outdoor activities.



Busan, a city for gourmets, is known for its diverse food with a lot of history and tradition. Busan cuisine reflects the city's local tastes, culinary traditions, and geographical characteristics. There are several Busan's top favorite foods for domestic and foreign tourists.

HOW TO GET TO BUSAN

Airport Networks

Route to Korea (Direct Flights)

A total of 94 international airlines in operation 5,083 round trips a week on 385 routes

A list of flight information by airlines can be found in the following



Flight Information
[Click Here](#)

Direct flight information to Busan's Gimhae International Airport(PUS) can be found by clicking here



KOREA AIRPORTS CORPORATION
[Click Here](#)



Nationwide

You can choose how to get to Busan from Seoul; via air, train, or bus.



Incheon Airport (ICN), 50 minutes (3 times/ day)
Gimpo Airport (GMP), 50 minutes (39 times/ day)



Seoul Station, 2 hours and 30 minutes (110 times/ day)



Suseo Station, 2 hours and 10 minutes (40 times/ day)



Travel from Busan Station to BEXCO/Hotels

Route 1 Travel between Busan Station ↔ BEXCO / Hotels

BEXCO and Hotels are easily accessible from Busan Station by three modes of inexpensive transportation.

Express Bus	Busan Station --> BEXCO / Hotels Takes approx. 30 min. / KRW 1,800 (USD1.48) Departure interval : 15-20 min.
Subway	Busan Station --> BEXCO --> Hotels Takes approx. 20 min. to 1hour / KRW 1,400 (USD1.15~)
Taxi	Busan Station --> BEXCO/Hotels Takes approx. 20-40 min. / KRW 15,000~20,000 (USD12.31~16.41)

Route 2 Travel between Busan's Gimhae International Airport & BEXCO / Hotels

BEXCO and Hotels are easily accessible from Busan Airport (PUS) via two modes of inexpensive transportation.

Limousine Bus	Busan Airport --> BEXCO / Hotels Takes approx. 50 min. / KRW 8,500 (USD 5.74)
Taxi	Busan Airport --> BEXCO/Hotels Takes approx. 40-50 min. / KRW30,000~35,000 (USD 24.61~28.71)

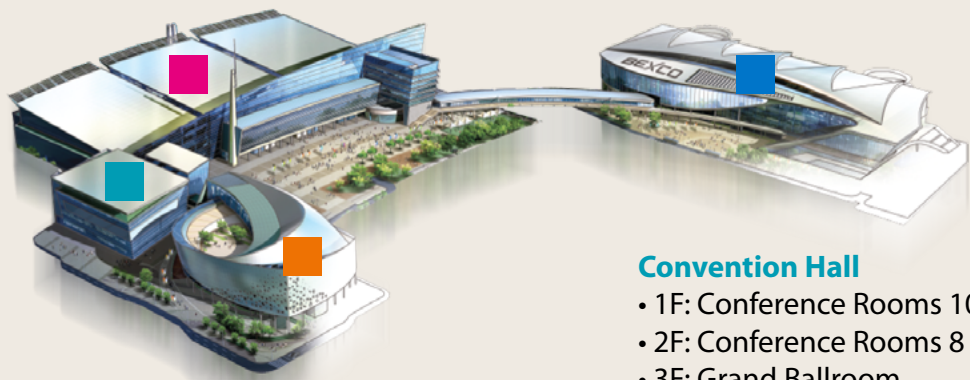
CONVENTION CITY, BUSAN



Venue

A global MICE business platform where dreams become reality. BEXCO, a landmark in the global maritime city of Busan, is a facilitator of successful business that has a vast wealth of knowledge.

The center implements a differentiated operation strategy that is based on its many years of successfully attracting and hosting highly acclaimed, large-scale international events. BEXCO prides itself on being world-leading exhibition and convention center that offers incomparable value to each on its clients. (E-mail : bexco@bexco.co.kr)



Convention Hall

- 1F: Conference Rooms 10
- 2F: Conference Rooms 8
- 3F: Grand Ballroom

Exhibition Center #1

- 1F Exhibition Hall: 26,508m²
- 2F: Conference Rooms 8
- 3F: Conference Rooms 7

Auditorium

- Max 4,002 Seats

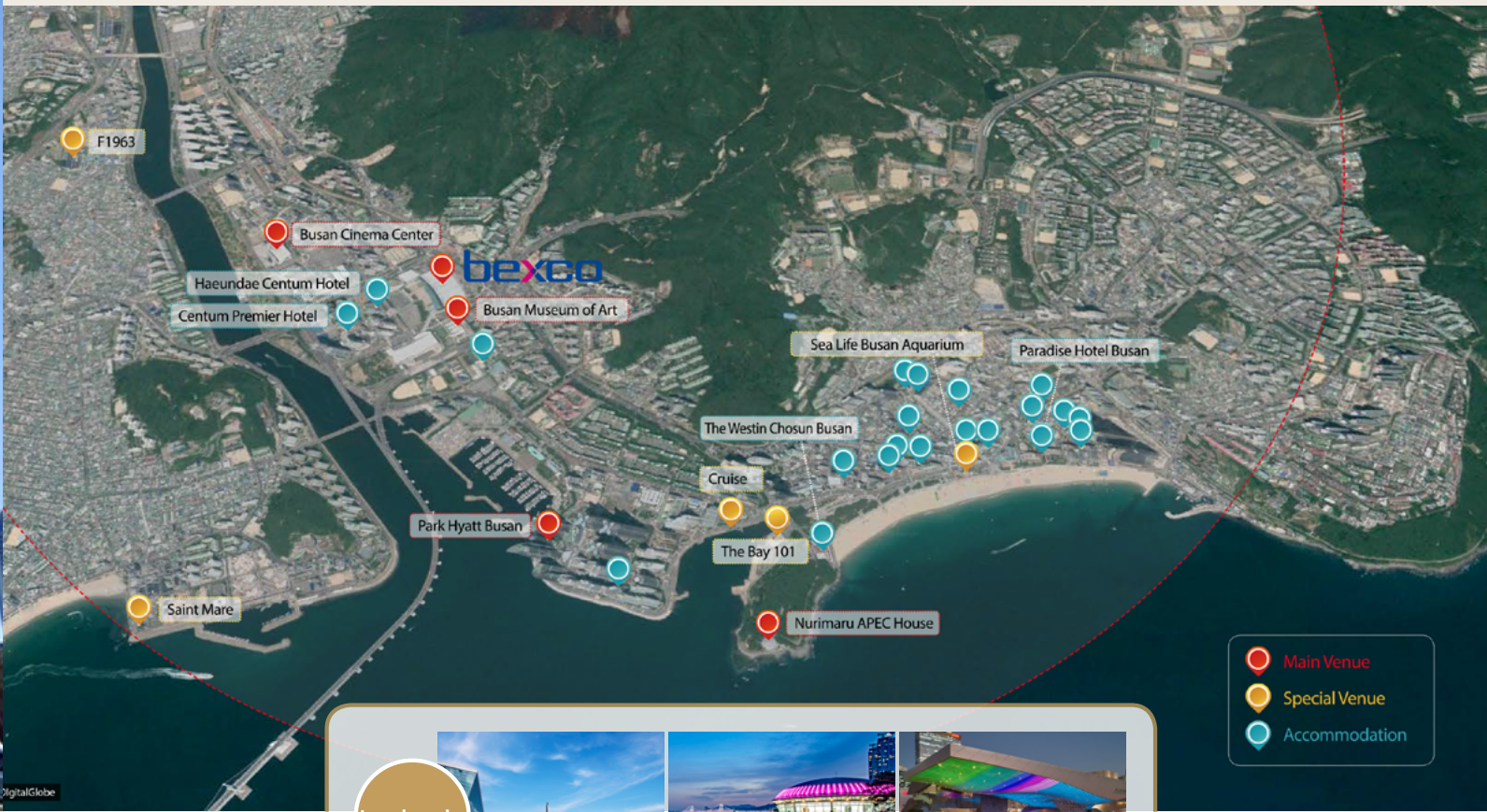
Exhibition Center #2

- 1F Exhibition Hall : 9,936m²
- 3F Exhibition Hall : 9,936m²
- Conference Rooms 13

Easy Access

Everywhere within 10 minutes

All venues and accommodations located just within 10 minute subway ride



Landmarks



BEXCO



Nurimaru APEC House



Busan Cinema Center

Shopping



Shinsegae Dept. Store



Lotte Dept. Store



Homeplus Discount Store

Relaxation



Haeundae Beach



The Bay 101 Night Yacht Tour



Dongbaekseom Island

Within 10 minutes

ACCOMMODATIONS

Many of these accommodation options, including international chain hotels, are located very close to the venue for IGC 2024. Busan's strongest point as a convention destination is that the city offers various hotels ranging from youth hostels to super deluxe hotels within 10 minutes distance from BEXCO.



Haeundae Centum Hotel(4*) and Centum Premier Hotel (4*) are within walking distance of BEXCO. In addition, ground transportation will be provided for hotels that require moving by car.

5-Star Hotels

Hotel	Room Type	Rooms
Paradise Hotel Busan	Deluxe City	172
	Deluxe Ocean (side view)	67
	Deluxe Ocean Terrace	221
	Junior Suite Ocean Terrace	36
Signiel Busan	Grand Delux Mipo Harbor View	54
	Premier Ocean View	36
	SIGNIEL Premier Mipo Harbor View	10
	Deluxe Suite Mipo Harbor View	22
The Westin Josun Busan	Deluxe Park	56
	Deluxe Beach	64
	Executive Park	74
	Executive Beach	75
Grand Josun Busan	Superior city	32
	Deluxe City	88
	Deluxe Partial Ocean	48
	Deluxe Ocean	81
Park Hyatt Busan	Park King	69
	Park Deluxe King	37
	Park Deluxe Twin	32
	Ocean View King	27
Lotte Hotel Busan	Deluxe Room	333
	Premier Room	145
	Club Room	73
Ananti Hilton Busan	DLX Mountain View	30
	Premium Mountain View	75
	DLX Ocean View	30
	Premium Ocean view	100

4-Star Hotels

Hotel	Room Type	Rooms
Centum Premier Hotel	Single	86
	Superior Double	161
	Superior Twin	71
	Deluxe Double	117
	Duluxe Twin	72
	Family Suite	8
	Duplex Suite	22
	Premier Suite	14
Shilla Stay Haeundae	Standard City View	94
	Standard Ocean View	56
	Deluxe City View	80
	Deluxe Ocean View	56
	Premier Deluxe City View	71
	Premier Deluxe Ocean View	28
	Ondol Suite City View	6
	Junior Suite Ocean View	8
	Grand Suite Ocean View	8
Haeundae Centum Hotel	Deluxe Twin	114
	Deluxe Double	122



VARIOUS TOUR ATTRACTIONS

You can experience various attractions such as nature, history, culture and food of Busan which is the largest marine city in Korea and the tourist center of Southeast of Korea.

Natural & Night Tour



Haeundae

Combined with the stunning scenery surrounding the national best beach and Korea's hottest place to be during the summer months.



Dongbaek Park

Many poets spent their time searching for the beautiful scenery of the place, where the sea and forests were mixed and recited the excitement to posterity.



Taejongdae

The name comes from the fact that King Taejong Muyeol of the Shilla Dynasty was infatuated with this magnificent scenery and made frequent visits.



Haeundae (Night)

The romance of the beach and the beautiful natural scenery and mysterious blend of one trillion lightening. After the session is over, you can walk along with this beautiful beach since the beach is near from the Venue.



Gwangan Bridge

It features endless stretches of sea, Oryukdo island, Hwangryeongsan Mountain and white sand beach, Dongbaek Island and Dalmaji Hill. The night view, directed by the high-tech lighting system, leads many tourists.



Bupyeong Kangtong Market

It is a traditional market located in the center of Busan. The night market, which opened in 2013 for the first time in Korea, has been highly acclaimed as it offers a variety of traditional foods and foods from around the world.

Historical



Joseon Tongsinsa History Museum

An ideal place for learning the history of the Joseon Tongsinsa, good will missions sent intermittently by the Joseon Dynasty of Korea to Japan about 12 times after the Imjin War.



Dongnae Eupseong Fortress

The site of the ferocious battle that took place in the early stage of the Imjin War (Japanese Invasion of Korea in 1592).



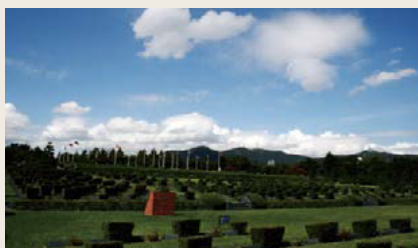
Chungnyeolsa Shrine

This shrine is dedicated to those patriotic Korean fighters who died resisting the Japanese aggressors during the Japanese Invasion of Korea (1592-1598).



Busan Museum

The museum houses artifacts that tell the history and culture of Busan from prehistoric times to modern times. You can experience Korean Traditional tea ceremony here.



UN Memorial Cemetery in Korea

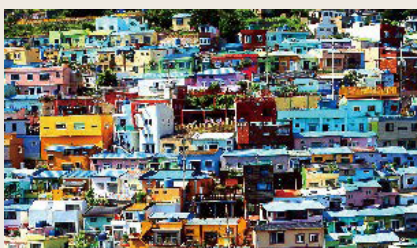
The only one of its kind in the world, rest heroic brave soldiers from a number of UN nations, who sacrificed their lives for world peace and freedom.



Provisional Capital Memorial Hall

It was open in 1984 to instill pride to the citizens of Busan who bore the duty as a provisional capital during the national crisis and also to commemorate the stature and historical importance of Busan.

Cultural



Gamcheon Cultural Village

This village started in the 1950s as a difficult place to live for refugees of 6.25 War. Now completely transformed thanks to "Art Factory" public projects, the once deserted houses and alleys around this area have been reborn as cultural arts spaces such as a town history gallery, book cafe, and so on.



Jagalchi Market

Jagalchi is full of the warmth of character unique to Busan. The largest fish market in the Southeast region, Jagalchi Market sells a full range of marine products including fresh catches of fish and good quality dried fish at reasonable prices.



Yonggung Temple

The Yonggung temple is situated near the sea unlike other temples located in mountains, therefore it's quite reasonable to call this temple an aquatic Buddhist sanctum.



Seomyeon Street

The busiest part of Busan. There are cafes, bars, and cheap and delicious restaurants, and young people are always on their way. In addition, there are many entertainment facilities such as nightclubs, arcades, and theaters where you can enjoy your leisure time.



Gukje Market

The market was formed in 1945 when the Japanese withdrew from the country and used their place in the international market to earn money by selling war supplies.



Busan Tower

The tower, constructed in 1973, is Korea's first observatory. It is a tower that represents Busan and is located inside Yongdusan Park.



B U S A N G E O P A R K 부산지오파크

Additional information

The Busan National Geopark is also included as one of the Field Trip courses. The Field Trip will be open during the Congress.

If you want to join the Field Trip, please check the courses and contact the Field Trip committee (fieldtrip@igc2024korea.org).

BUSAN NATIONAL GEOPARK

Location

The Busan Geopark is in Busan Metropolitan City, located at the southeastern end of the Korean Peninsula, on the eastern edge of the Eurasian continent. The south and east sides of the Geopark are facing the sea, the north is a mountainous area and in the west the Nakdong River flows.

Physical Characteristics

Busan Metropolitan City, where the Busan Geopark is located, is located at the southern end of the Taebaek Mountains. Having a rias coast with erosional mountains and small peninsulas, islands, and bays at an altitude of 400 to 800m above sea level. Busan has indented coastlines and poor development of coastal plains. Located at the southeastern tip of the Korean Peninsula which is in the eastern part of the Eurasian continent with East Asian summer monsoons. Busan has a temperate climate with four distinct seasons.

Geological Features

The Busan Geopark, located in Busan Metropolitan City, is situated within the tectonic structure of the Cretaceous Gyeongsang Basin. The Gyeongsang Basin, the largest basin in Korea, comprises three sub-basins, Yeongyang, Uiseong, and Miryang sub-basins. They are filled with the non-volcanic sedimentary strata of the Sindong Group, the partly volcanic strata of the Hayang Group, the dominantly volcanic strata of the Yucheon Group and the Bulguksa intrusive rocks, in ascending order.

The Busan Geopark is located in the southeastern part of the Miryang Sub-basin, where volcanic and sedimentary rocks of the Yucheon group and plutonic rocks corresponding to the Bulguksa Granite are mainly distributed.

Geosites in Busan Geopark



Nakdonggang Estuary



Taejongdae



Songdo Peninsula



Yonggungsa Temple



Annam Park



Haeundae



**IGC
2024**
the 37th International Geological
Congress 2024



IUGS
International Union of Geological Sciences

IGC 2024

The Great Travelers :
Voyages to the Unifying Earth

Organized by



THE GEOLOGICAL SOCIETY OF KOREA



Korea Institute of Geoscience
and Mineral Resources



Busan Metropolitan City

Hosted by



IUGS

International Union of Geological Sciences

Sponsored by



Ministry of Science and ICT



Ministry of Trade,
Industry and Energy



Ministry of
Foreign Affairs



KOREA
TOURISM
ORGANIZATION



BUSAN
TOURISM ORGANIZATION